

HOT & COLD WATER DISPENSER

INSTRUCTION MANUAL

VII. CLEANING PROCEDURES

All tanks and pipes had received in-factory sterilizing treatment, but users are advised to clean them on a regular basis.

- 1.Regular cleaning: keep the product heating for 30 minutes, then lift up water bottle, switch off power source, open draining cap and 2 taps to release residual water(Caution: avoid direct contact with hot water because scald may occur)
- 2.If you use mineral water,it is necessary to clean the heating coil and tank with 2% cooling citric acid and clean water once a month to assure good performance and good water quality.The clean method is same to the above metioned in clause 1.

VIII. MALFUNCTION HANDLING

Malfunction incidents	Possible causes	Solutions
1. Display does not light up	Power connection failure	(1) Test electricity in the socket (2) Make sure socket is plugged (3) Make sure to turn on power switch
2. Shock when touching the product	Improper earthing	Must use 3-core socket and leak protector
3. Abnormal noise	Improper positioning of the product	(1) Ensure the product is properly and and firmly positioned (2) Keep the back of the unit out of touch with any object
4. Water leakage	bottle damage	Change water bottle

CAUTION: In order to avoid a hazard due to inadvertent resetting of the thermal cutout, this appliance must not be supplied through an external switching device, such as a timer, or connected to a circuit that is regularly switched on and off by the utility.

IX. CORRECT DISPOSAL OF THIS PRODUCT



This marking indicates that this product should not be disposed with other household wastes throughout the EU. To prevent possible harm to the environment or human health from uncontrolled waste disposal, recycle it responsibly to promote the sustainable reuse of material resources. To return your used device, please use the return and collection systems or contact the retailer where the product was purchased. They can take this product for environmental safe recycling.

READ THIS MANUAL CAREFULLY BEFORE USE THE PRODCUT

INDEX

INDEX	1
I. PARTS(Illustrations)	2
II. FEATURES	3
III. INSTRUCTIONS	3
IV. OPERATING PROCEDURES	4
V. CORRECT USE OF REFRIGERATING CABINET	6
VI.PRECAUTIONS	6
VII.CLEANING PROCEDURES	7
VIII. MALFUNCTION HANDLING	7
IX. CORRECT DISPOSAL OF THIS PRODUCT	8

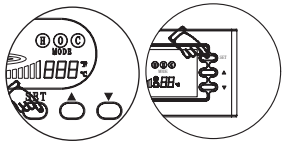
V. CORRECT USE OF REFRIGERATING CABINET

- 1.Wipe clean the inner walls and bottom tray inside is completely dry, then shut the refrigerator door tight.
- 2.The refrigerating system in a water dispenser with bottom refrigerating cabinet works to control both water-cooling and cabinet refrigerating and can not be used alone for the refrigerator.
- 3.Before using the refrigerator,must keep the cabinet running empty for two hours before storing food.Must leave sufficient space between food storage to allow sufficient air circulation.
- 4.Remove residual water accumulated on the bottom tray frequently to prevent cold-water leakage.

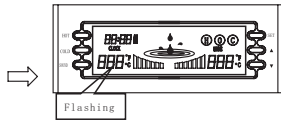
VI. PRECAUTIONS

- 1.Danger: Do not force in/out the power cable to avoid damage to the cable and consequential danger to yourself.
- 2.Do not wipe the product with water or oil to avoid damage on the product service! Wipe the surface with soft and dry cloth to keep clean.
- 3.Danger: Do not alter power socket or overextend power cable to prevent possible fire hazard.
- 4.Danger: Do not power on/off the unit by directly plugging in/out the socket!
- 5.Keep away from heater, and out of room exposed to direct sunlight, rain or steam.Keep away from explosive materials.
- 6.Do not tilt the product over 45 ° during moving to avoid damage to the compressor.
- 7.In case of malfunction the alarm will sound and the dispenser will indicate letter "E ?", contact your local service representative immediately for repair. Do not try to open the product and repair the product by yourself.
- 8.Placing bottled water on the dispenser would cause the center of gravity shift upward. must stabilize the dispenser firmly before use.
- 9.If the supply cord is damaged ,it must be replaced by the manufacturer,its service agent or similarly qualified persons in order to avoid a hazard.
- 10.The product is for household use only.
- 11.This appliance is not intended for use by persons(including children) with reduced physical,sensory or mental capabilities,or lack of experience and knowledge,unless they have been given supervision or instruction concerning use of the appliance by a person responsible for their safety.
- 12.Children should be supervised to ensure that they do not play with the appliance.

6. Setting



6.1 Press "set" button

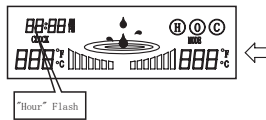


6.2 First enter hot temperature setting as it flashes

▲ Temperature increases 1°C

▼ Temperature decreases 1°C

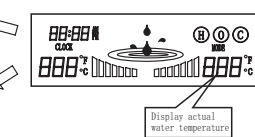
6.3 Press "▲" or "▼" to adjust temperature to a desired level between 35°C-94°C, then Press "set" key again to enter cold temperature setting.



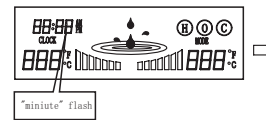
6.6 Press "▲" or "▼" key to adjust hours, AM, PM indicators illuminate in circular motion; press and hold "▲" or "▼" to fast adjust numerals up and downward.

▲ Temperature increases 1°C
▼ Temperature decreases 1°C

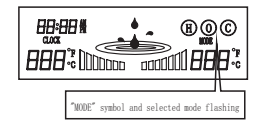
6.5 Press "set" key again to enter hour setting.



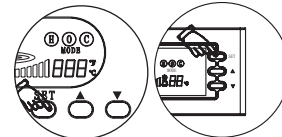
6.4 Then enter cold temperature setting and repeat the process until the desired temperature level is selected. Cold water temperature can be adjusted between 5°C-10°C.



6.7 Press "set" again to enter 'minute' setting and repeat the process



6.8 Then press 'Set' again to complete clock setting while entering 'Mode' setting; 'H' stands for home use, 'O' for office; 'C' for normal. Press "▲" or "▼" to switch between different modes.



6.9 Press "set" key again to finish setting.

7. Shut off

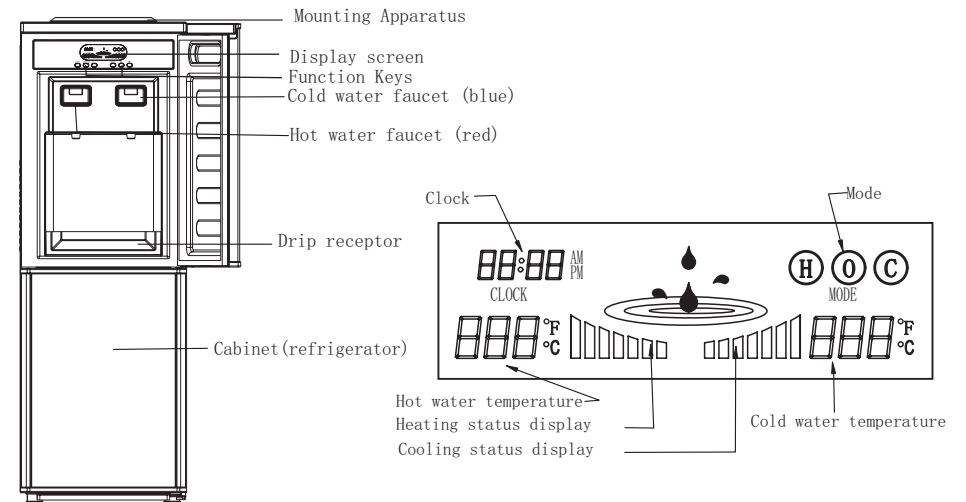
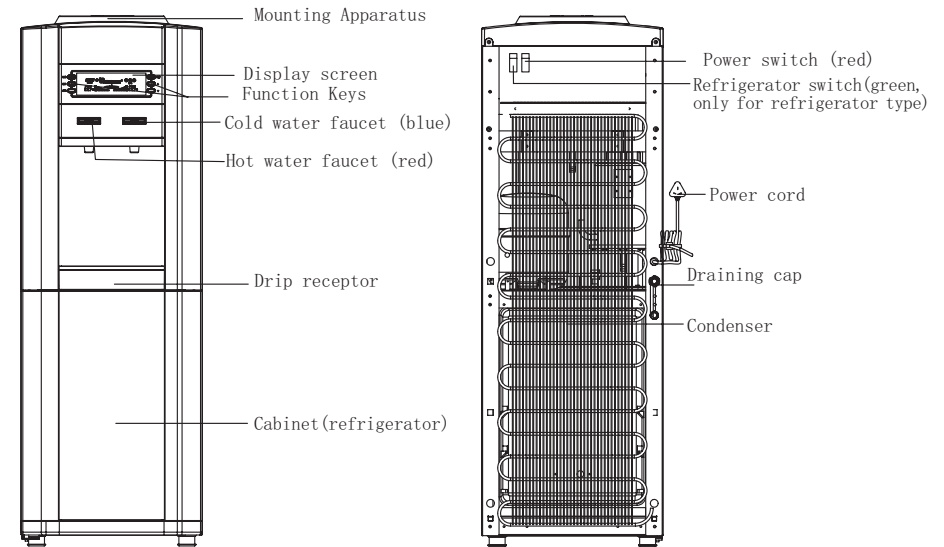
To shut off the heating, cooling or sound function press and hold respective function key for 3 seconds.

8. Classification

H refers to home use, starting time is: 06:00-08:00AM; 11:00-14:00PM; 17:00-22:00PM;
O refers to office use, starting time is 7:30-20:00PM;
C refers to normal setting with the default time as 24 hours.

(The start or close function here refer to start or close heating and cooling function)

I. PARTS (Illustrations)



II. FEATURES

This water dispenser is capable of simultaneously dispensing hot and cold water from 35°C ~ 94°C and 5°C ~ 10°C respectively. Supply water can be either three or five gallon bottled or RO-purified water; dispensed water is suited for a wide variety of needs for drinking water, making tea, coffee or instant food, etc. The dispenser can be equipped for both household and institutional facilities such as school, hotel and commercial offices.

This water dispenser adopts advanced technology of microcomputer control, as well as latest techniques of compressor refrigerating and electric heating, yielding both highly efficient temperature control and powerful heating and cooling capacities.

The product is equipped with latest user-friendly monitor clearly displaying unit working conditions and temperature levels. Automatic restart function provides easier access to temperature control by automatically resuming the unit to the set temperature level as before unexpected power outage.

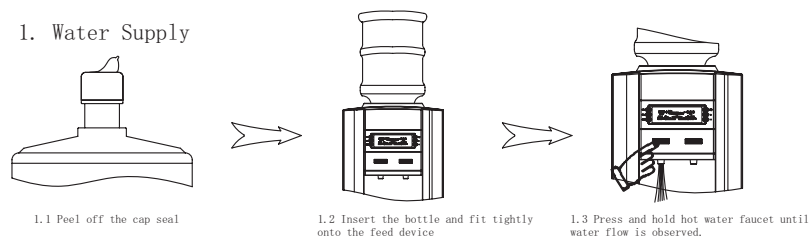
Both the cold and hot tanks are made of high-grade stainless steel, ensuring high durability and satisfactory hygienic level.

III. INSTRUCTIONS

1. Place the dispenser steadily on solid ground, keeping the back surface at least 15cm away from the wall.
2. Ambient space must be dry, clean and well ventilated with temperature desirable level between 10°C~38°C.
3. Keep away from precious furniture and other electrical appliances to prevent water splashing onto these items when inserting the water bottle.
4. Must use 3-core socket with proper earthing and leak protector as proper power connection.
5. Set the power switch to "OFF" before plugging in the socket.
6. Keep power off if the machine is not to be used for a period time to prevent repeated heating which may cause water leak. During extensive unused period power user must unplug the power socket and open the draining cap to release residual water. Do not forget to close the cap before use again.
7. Do not open the refrigerator during in working condition.
8. Change and/or clean frequently the air filtering cotton strip positioned on the top cover of the dispenser.
9. Water must be observed from the hot faucet before turning on the power switch.
10. In the back of water dispenser there is a fixing sheet. Consumers should connect the fixing sheet with the wall or unmoved object by themselves, in order to avoid it fall down.
11. WARNING-Keep ventilation openings, in the appliance enclosure or in the built-in structure, clear of obstruction.
12. WARNING-Do not damage the refrigerant circuit.
13. WARNING-Do not use flammable appliances inside the food storage compartments of the appliance, unless they are of the type recommended by the manufacturer.

IV. OPERATING PROCEDURES

1. Water Supply

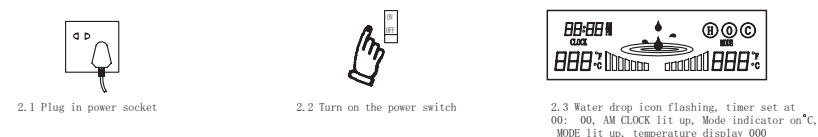


1.1 Peel off the cap seal

1.2 Insert the bottle and fit tightly onto the feed device

1.3 Press and hold hot water faucet until water flow is observed.

2. Power on

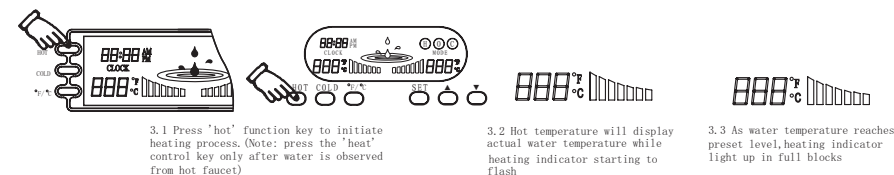


2.1 Plug in power socket

2.2 Turn on the power switch

2.3 Water drop icon flashing, timer set at 00:00, AM CLOCK lit up, Mode indicator on°C, MODE lit up, temperature display 000

3. Heating

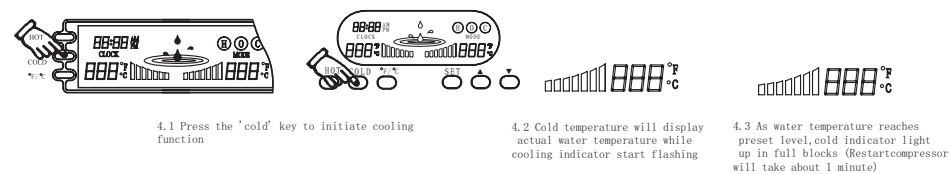


3.1 Press 'hot' function key to initiate heating process. (Note: press the 'heat' control key only after water is observed from hot faucet)

3.2 Hot temperature will display actual water temperature while heating indicator starting to flash

3.3 As water temperature reaches preset level, heating indicator light up in full blocks

4. Cooling

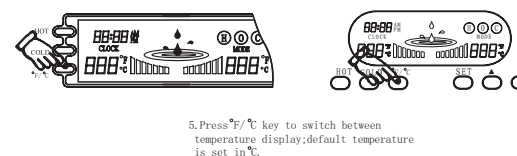


4.1 Press the 'cold' key to initiate cooling function

4.2 Cold temperature will display actual water temperature while cooling indicator start flashing

4.3 As water temperature reaches preset level, cold indicator light up in full blocks (Restart compressor will take about 1 minute)

5. Temperature switch(°F/°C)



5. Press °F/°C key to switch between temperature display; default temperature is set in °C.